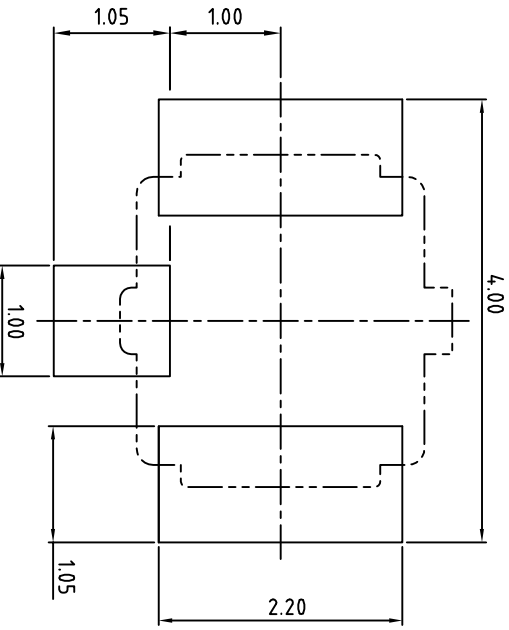


- NOTE: UNLESS OTHERWISE SPECIFIED
1. DIMENSION SHALL BE INTERPRETED PER ANSI Y14.5M-1994.
  2. DIMENSION MARKED WITH "▼" SHOULD SPECIFIED ON INSPECTION PLAN.
  3. CONTACT RETENTION FORCE: 0.4 N MIN.
  4. CONTACT MATERIAL: COPPER ALLOY.
  5. INSULATOR: HIGH TEMPERATURE PLASTIC UL94 V-0.
  6. CONTACT FINISH: GOLD PLATED 5U" ON MATING AREA, GOLD FINISH 1U" ON SHELL.
  7. ALL OVERHEAD: NICKEL RIBBONS SPECIFICATION AND IN CONFORMITY WITH REACH & SVHC STANDARD STIPULATIONS.



RECOMMENDED PCB LAYOUT



REV.	ECN NO.	DESCRIPTION	APPD	DATE
A		NEW RELEASE DRAWING	A ROD	02/21/08

THIS IS CAD DRAWING, DO NOT REVISE MANUALLY!!!

ITEM	PART NUMBER	DESCRIPTION	Q'TY
3	GROUND PAD	METAL SHELL, GOLD/BRIGHT GOLD PLATING	1
2	CENTER PIN	CENTER CNT, GOLD/BRIGHT GOLD PLATING	1
1	HOUSING	OVER MOLD HOUSING, LCP, IVORY, UL94V-0	1

TOLERANCES UNLESS OTHERWISE SPECIFIED	UNITS	FINISH	SEE TABLE	DATE	DRWN	DATE	CHKD	DATE	APPD	DATE
X	±0.30	MATL	SEE TABLE	02/21/08	A ROD	02/21/08	A ROD	02/21/08	Tseng	02/21/08
XX	±0.15	FINISH	SEE TABLE							
XXX	±0.10									
X°	±1°									

MAKE (INTENDED USE)	TITLE	DWG NO.
RF HEADER(U,FL)	UCONN ELECTRONICS	RF-101-001-01

SCALE	SHEET	REV.
1:1	1/1	A

THIS DRAWING/DRAWING DOCUMENT CONTAINS INFORMATION THAT IS PROPRIETARY TO FORMOSA CO., LTD. AND SHOULD NOT BE USED WITH WRITTEN PERMISSION.